
Quick Guide

iSolarCloud APP

Mobile Terminal Application

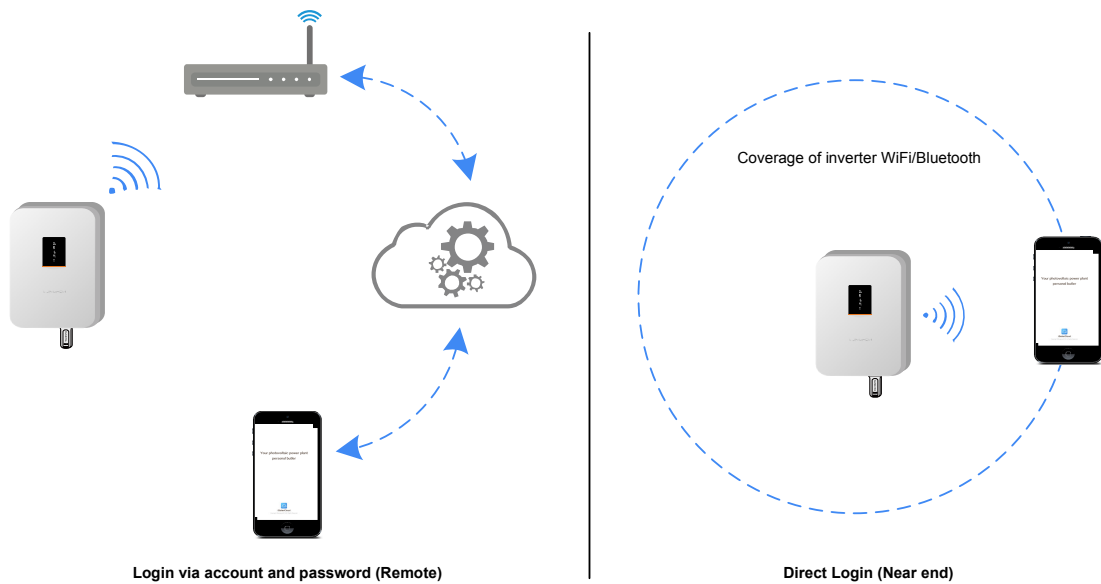


1 Preface

Brief introduction

The iSolarCloud is a mobile terminal application used for managing PV plants. Based on different user roles such as end user and O&M engineer, the iSolarCloud APP provides services such as group plant operation analysis and intelligent operation and maintenance. The APP supports display of plant data, quick plant connection, remote parameter setting, fast fault diagnosis and notification, intelligent work order assignment, analysis on power generation and revenue, etc., so as to effectively facilitate end-to-end O&M.


Users can log into the APP in the **【Direct Login】** manner or via account and password according to actual conditions.



Content

This document briefly describes how to install, configure, and operate the iSolarCloud APP.



- All pictures in this document are based on the APP of V2.1.3.20190130, and the actual user interfaces may differ.
- The symbol  indicates information requiring notice.

Target group

- End user
- O&M engineer

APP Installation

- Method 1

Download the iSolarCloud from MyApp/Google Play (Android) or APP Store (iOS).

- Method 2

Scan the following QR code to download and install the APP.



2 Login

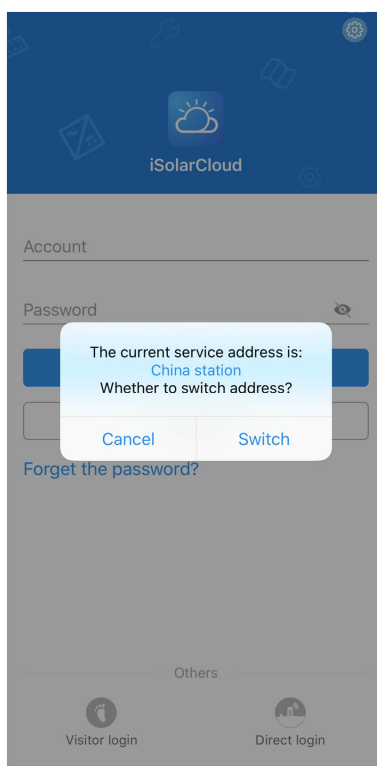
2.1 Login via Account and Password (Remote)



Ensure that the mobile phone can normally connect to the Internet.

2.1.1 Server Setting

After login, the server selection box pops up. Users in mainland China should select "China station" as the service address; users in Europe and Africa should select "Europe station"; and users in other regions should select "International station".



The service address of the APP should be the same as that of the Logger, and communication error may occur if otherwise. In case of any problems, please contact Sungrow.

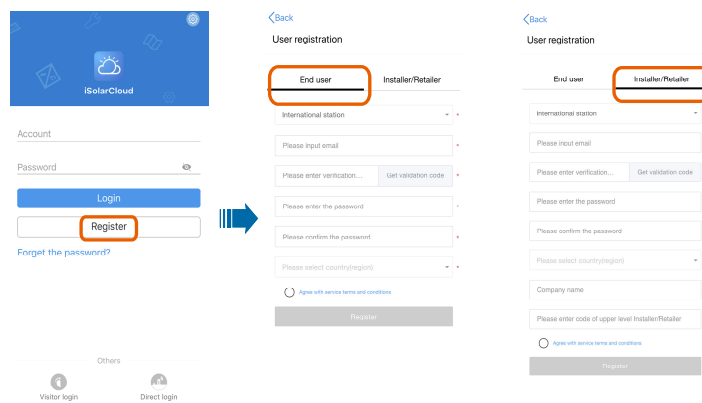
2.1.2 User Registration

Register to get an account and a password.

The users are divided into end user and installer/retailer.

The end user can view plant information, create plants, set parameters, share plants, etc.

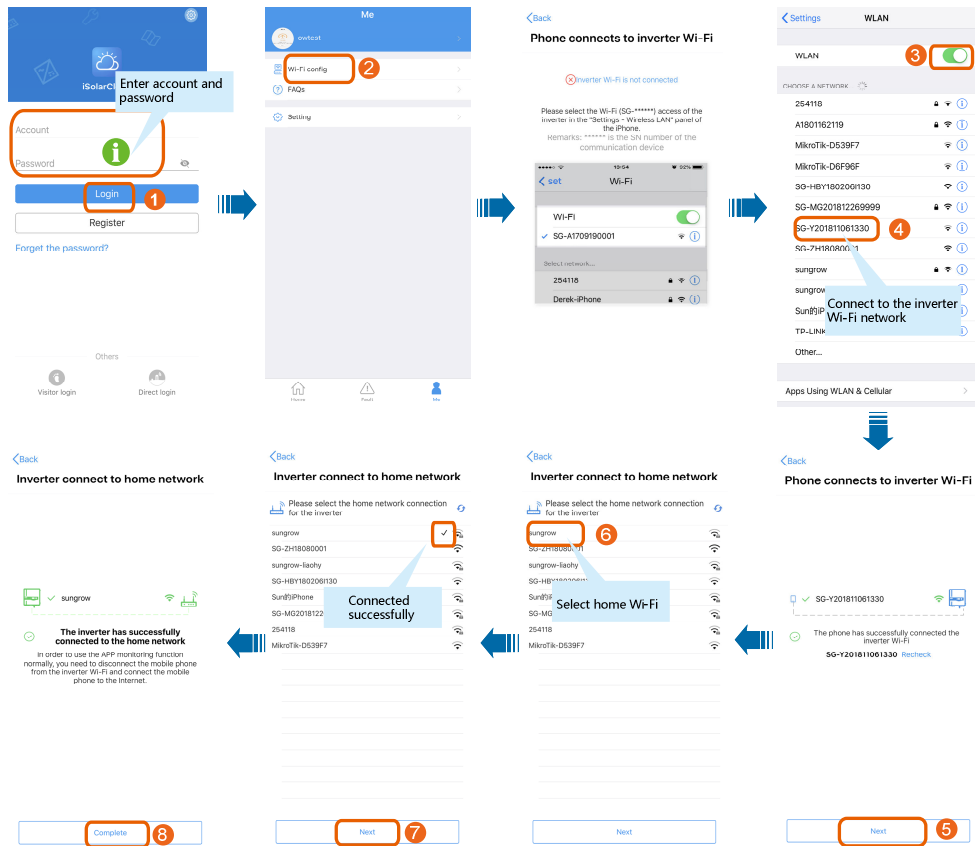
The installer/retailer can help the owner create plants and manage installed/maintained plants.




2.1.3 Wi-Fi Setting

The WiFi module and home router can be connected via the Wi-Fi setting function, so that the inverter can communicate with the iSolarCloud server. The users can view inverter data or send instructions to control the inverter via the APP.

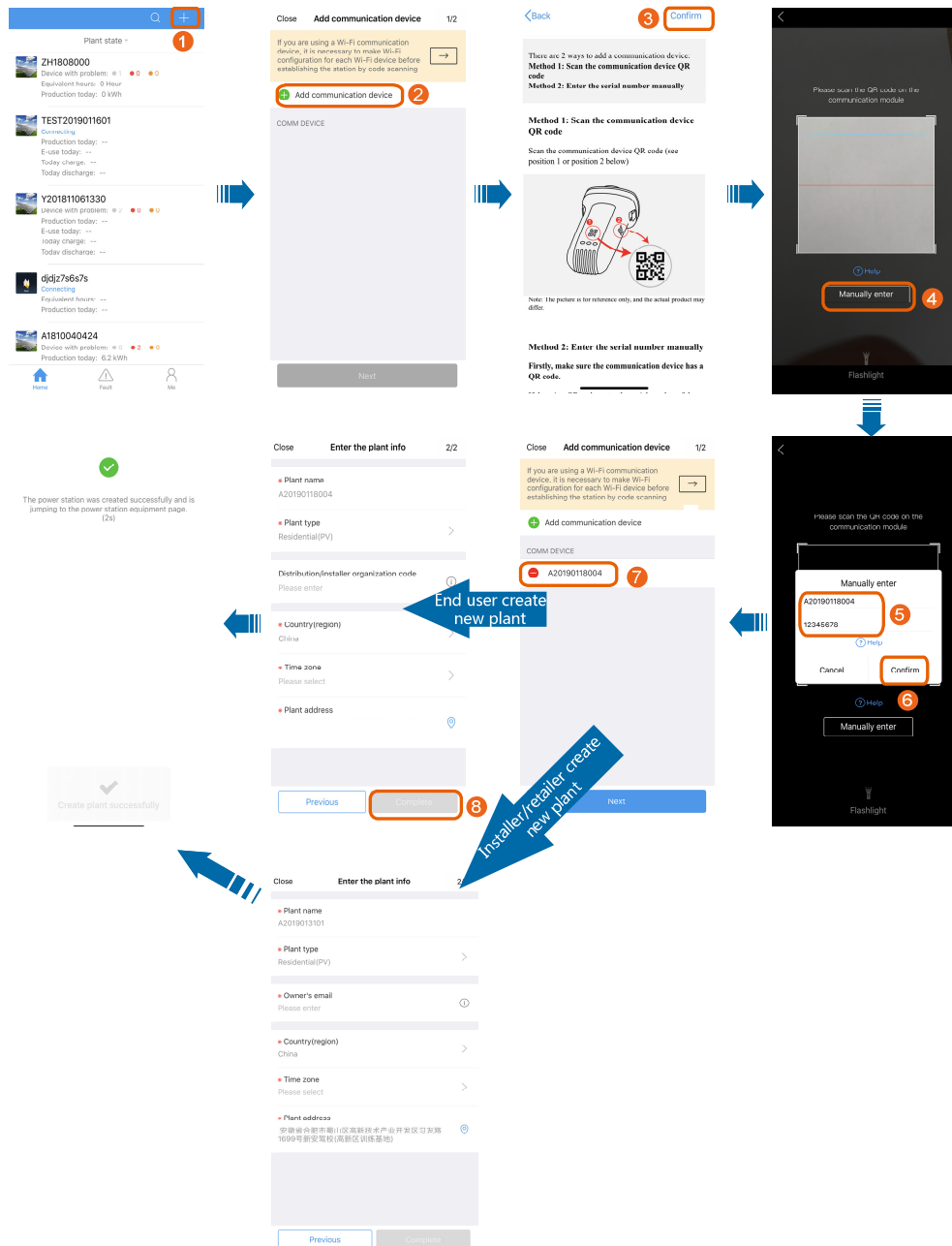
Wi-Fi setting steps are as follows:



- Alternatively, tap the icon " " in the upper right corner on the login interface, and select Wi-Fi configuration, to configure the Wi-Fi.
- Contact the installer/retailer or Sungrow to ask for the username and password.
- The description is given by using iOS interfaces as example. The operation method for Android system is the same as that of the iOS, but the interfaces may slightly differ.
- When the mobile phone is connected to the inverter Wi-Fi network, the iOS system cannot automatically jump to the wireless network interface, and therefore the users need to manually switch to "Settings-WLAN".
- The inverter network is named in the form "SG-WiFi module SN", where the SN is on the side of the WiFi module.
- To ensure that the mobile phone can normally access the Internet, disconnect it from the inverter Wi-Fi, and then, connect the phone to the home router, or turn on the "Mobile data".

2.1.4 Create New Plant

Creating steps are as follows:



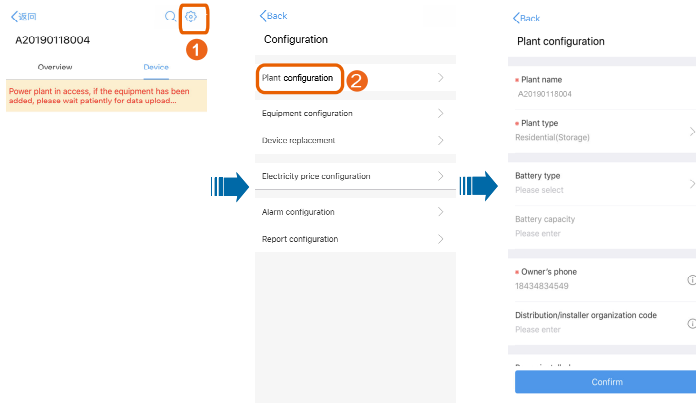


- The above screenshots based on "Household power plant" are for reference only.
- The end user and installer/retailer create new plant, the interface is slightly different, please refer to the actual interface.
- In creating new plant, the mobile phone number/e-mail address is required, and each phone number/e-mail address can only be registered once.
- After the plant is created, click 【Complete】, and the information on the plant can be viewed on the home page.
- The end user can fill in the distribution/installer organization code to appoint the installer/retailer to manage the plant. The organization code can be obtained from the corresponding installer/retailer. The installer/retailer helps the end user create plants and manage the plants by default.

2.1.5 Configuration

Plant configuration

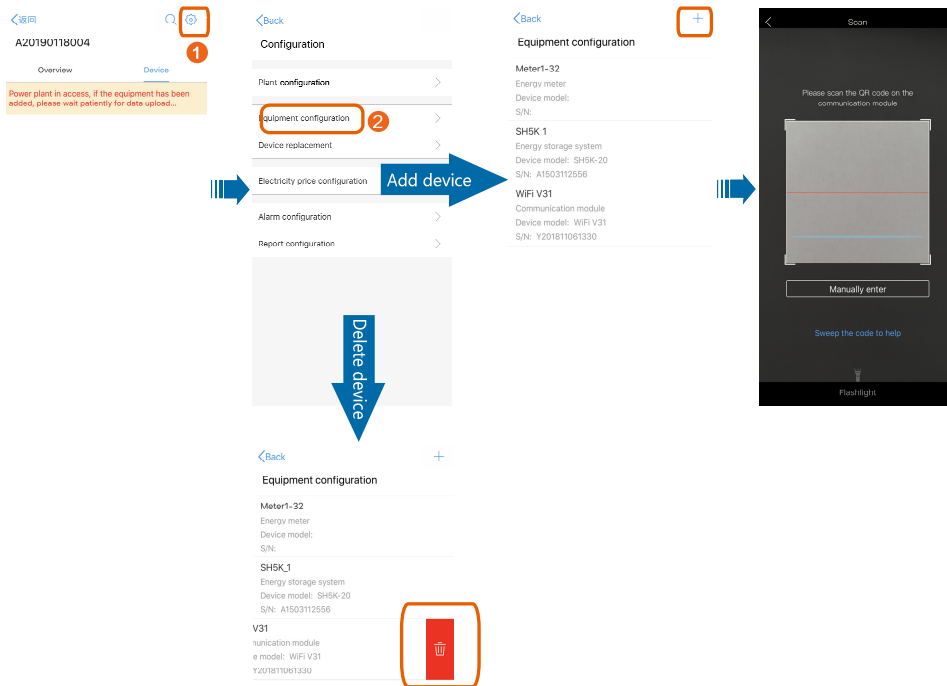
Modify plant information via the plant configuration function.



- The end user can fill in the distribution/installer organization code to appoint the installer/retailer to manage the plant. The organization code can be obtained from the corresponding installer/retailer. The end user can change the installer/retailer organization code to accordingly change the installer/retailer who manages the plant.
- The installer/retailer can change the organization code of the plant to transfer the plant to other dealers/installers for management.

Equipment configuration

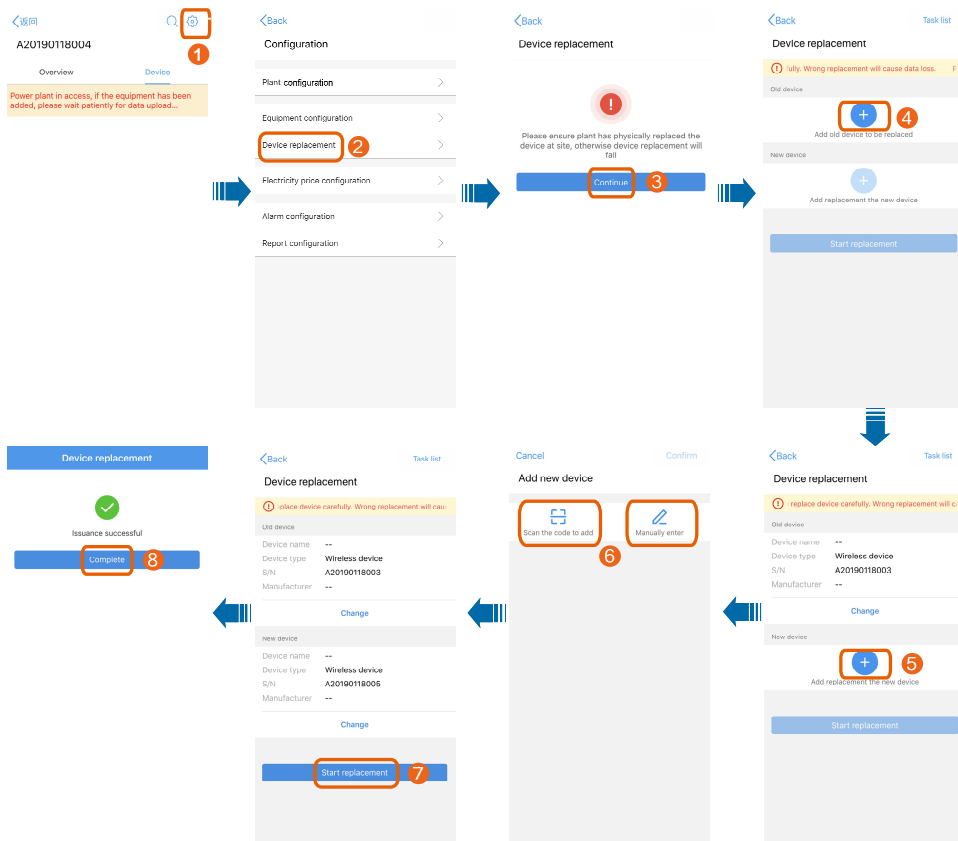
Add or delete communication devices via the equipment configuration function.



- It takes 1 to 10 minutes to establish communication connection after the communication device is added. The newly added device will be displayed on the device list screen.
- For the iOS system, swipe the screen left to delete the communication device; and for the Android system, press and hold the screen to delete the device.

Device replacement

Replace the communication device or inverter via the device replacement function.



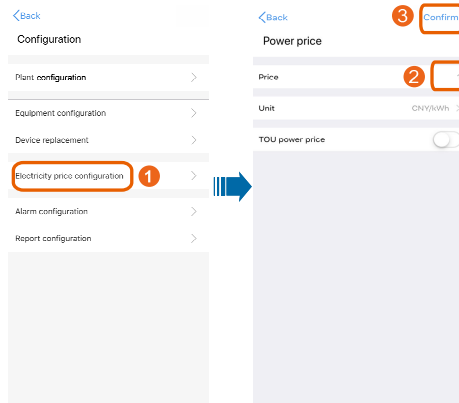
- Scan the QR code or manually input device SN to add new device.
- When replacing the inverter, you may select the option "Power generation compensation to new device", to add the total power generation of the replaced inverter to the new inverter as compensation value.



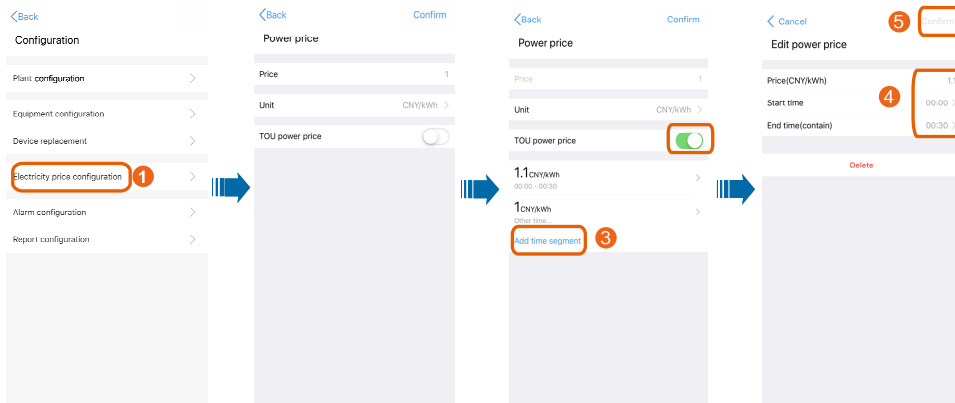
Electricity price configuration

Set the electricity prize or TOU power price on this screen.

Set electricity price

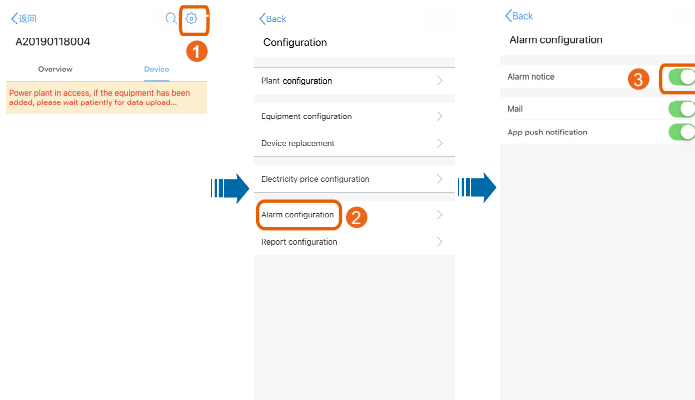


Set TOU power price



Alarm configuration

Set alarm notification manner on this screen.

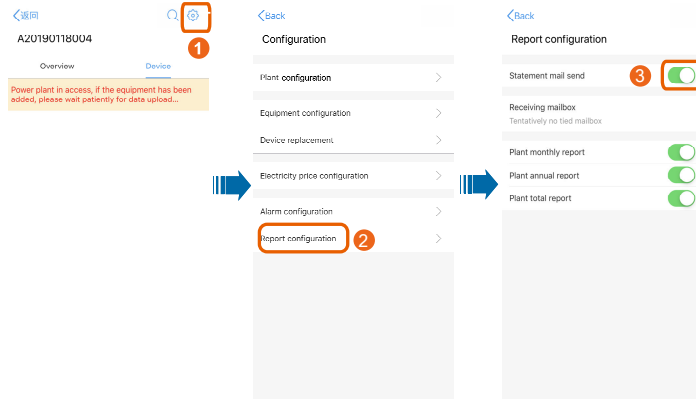




The option "alarm notice" is in off state by default.

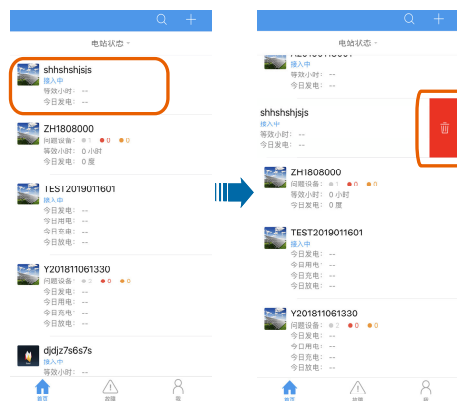
Report configuration

Set report notification manner and report type (monthly, annual, or total report).



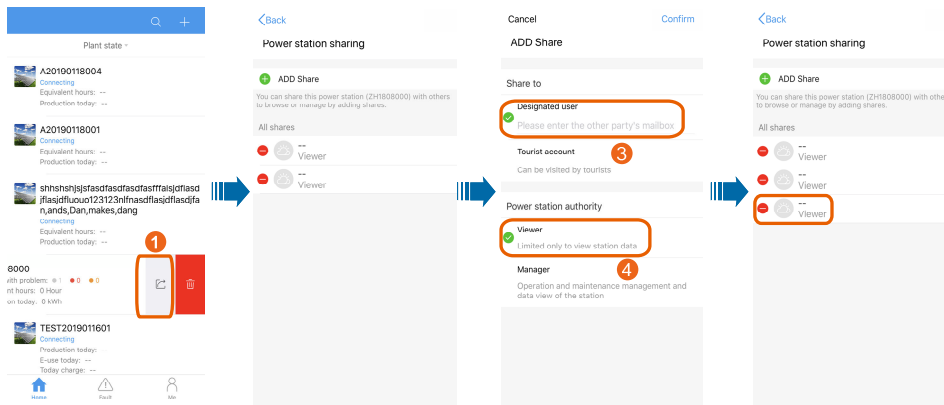
The option "statement mail send" (send the report via e-mail) is in the off state by default.

2.1.6 Delete Plant



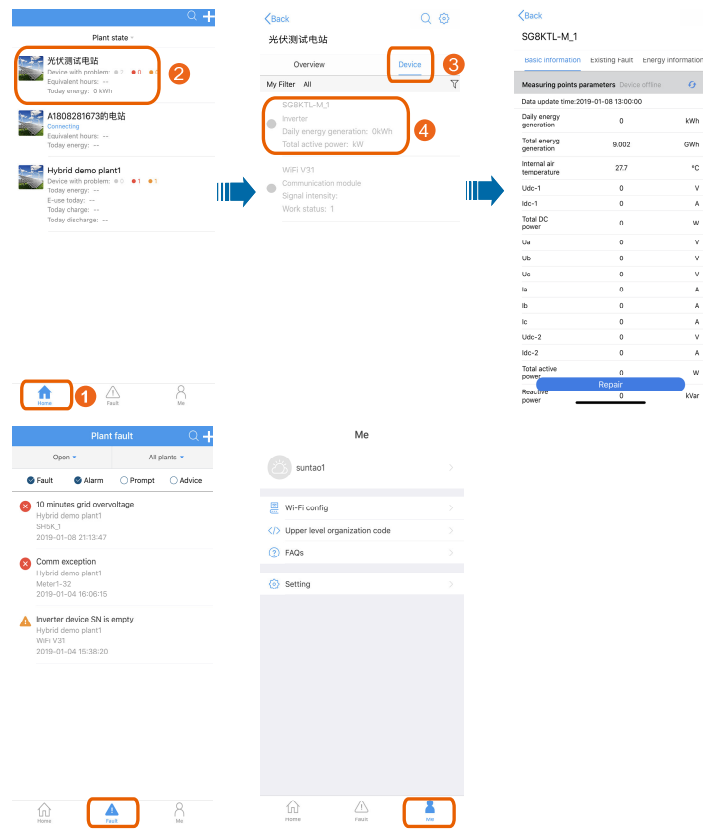
- For the iOS system, swipe the screen left to delete the plant; and for the Android system, press and hold the screen to delete the plant.
- End users can delete only their own plants, and dealers/installers can delete only plants authorized to them by the owners.

2.1.7 Plant Sharing



- For the iOS system, swipe the screen left to share the selected plant; and for the Android system, press and hold the screen to share the selected plant.
- Only end users can share the household plant, and the dealers/installers do not have the sharing permission but can receive shared message.
- When the end users share the plant to tourist, the power station authority should be set to "Viewer", and the tourist can only view plant data. When the end users share the plant to designated user, the power station authority can be set to either "Viewer" or "Manager", and the designated user can view plant data or manage the plant.

2.1.8 Plant Information



【Home】 : Information such as plant state, plant list, device basic information, and energy information can be viewed on this interface.

【Fault】 : Information such as fault, alarm, prompt, and advice can be viewed on this interface.

【Me】 : Personal information and FAQs can be viewed, and Wi-Fi config and privacy setting can be performed on this interface.



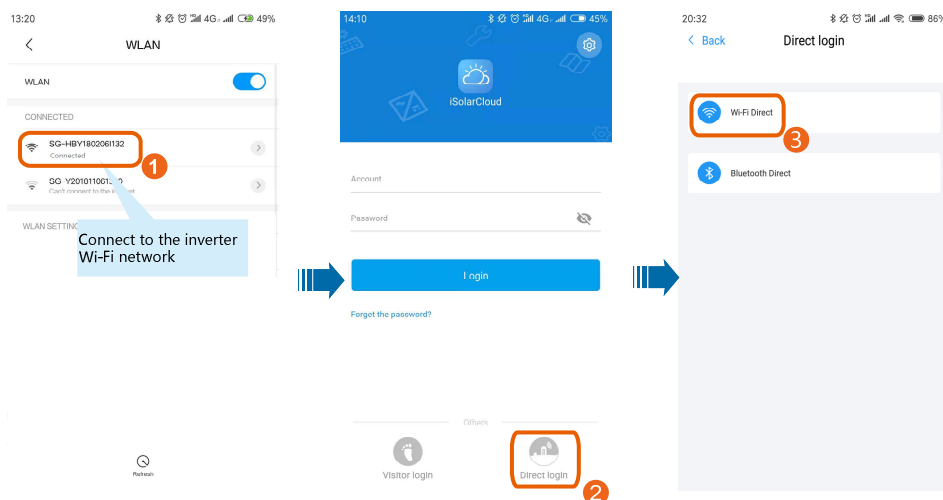
Only the installer/retailer has the "Upper level organization code" permission. With the upper level organization code filled in, the superior installer/retailer can manage the plant.

2.2 Wi-Fi Direct Login (Near End)



Ensure that the mobile phone is within the coverage of the wireless signal from the WiFi module when accessing the APP in the 【Wi-Fi Direct】 mode.

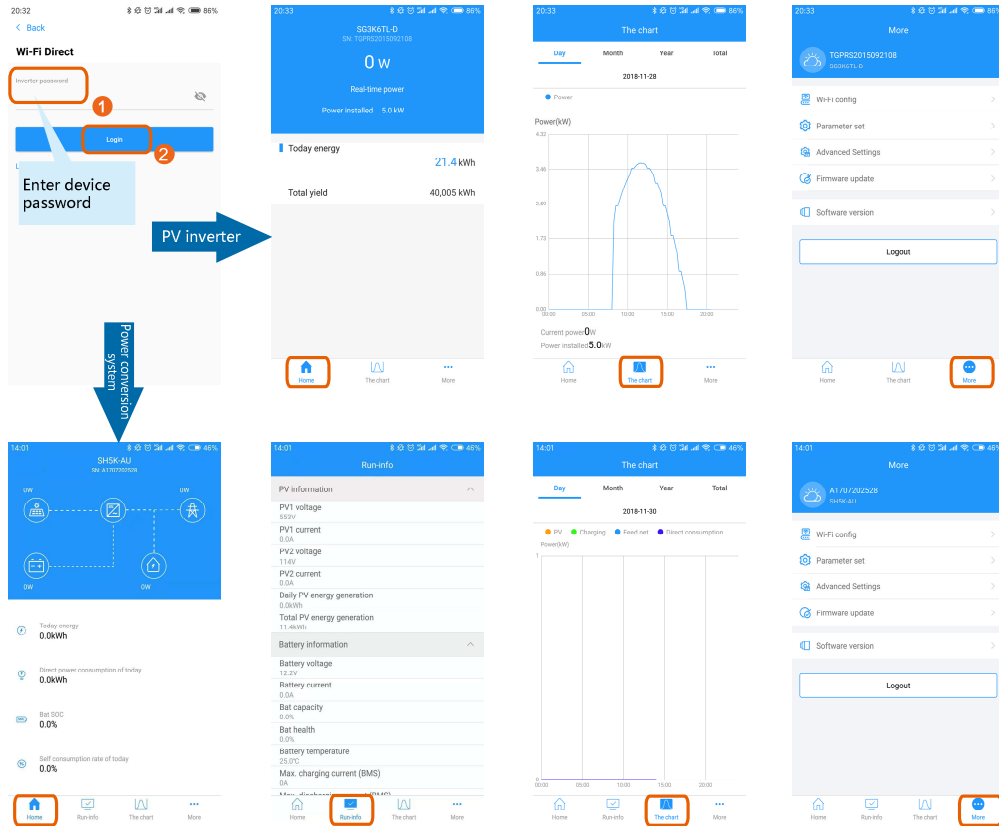
Step 1 Enable the Wi-Fi function on the mobile phone, connect the phone to the Wi-Fi network named in the form "SG-WiFi module SN" (the SN is on the side of the WiFi module). After successful connection, return to the login screen, and tap 【Direct Login】 and 【Wi-Fi Direct】 on the next page.



Step 2 Enter the device password to access the APP.



The password is printed on the nameplate attached to the side of the inverter. If no password is found or the password is incorrect, please contact Sungrow.



PV inverter connected

【Home】 : Information such as real-time power, today power yields, and accumulated power yields of the current inverter is displayed.

【Chart】 : Daily, monthly, annual, and accumulated power yields are displayed in the curve form.

【More】 : Perform operations such as Wi-Fi setting, parameter setting, firmware upgrading.

Power conversion system connected

【Home】 : Power, today power yields, and accumulated power yields of the current inverter are displayed.

【Run-info】 Information on the PV module and battery of the current inverter is

displayed.

【Chart】: Daily, monthly, annual, and accumulated power yield information is displayed in the curve form.

【More】: Perform operations such as Wi-Fi setting, parameter setting, firmware upgrading.



- For Wi-Fi setting steps, refer to section 2.1.3.

Firmware upgrading

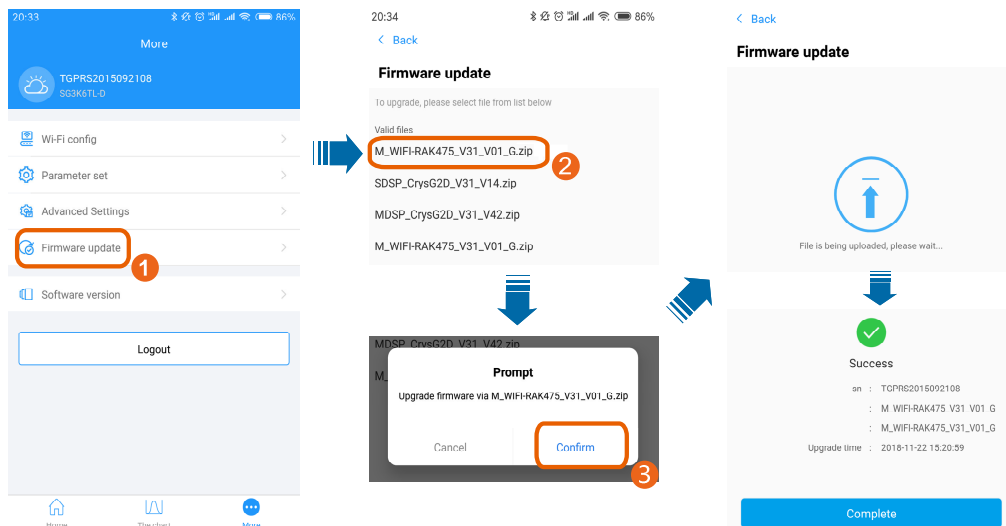
The users can upgrade inverter and WiFi module firmware via the APP, and specific steps are as follows:

Step 1 Contact the installer/retailer or Sungrow to ask for the firmware upgrading package (in the .zip format).

Step 2 (Android) Copy the package to the directory *sungrow/update/* by using a data cable or in other manners.

Step 3 (iOS) Copy the package to the directory *Documents/update/* by using a data cable or in other manners.

Step 4 Tap 【Firmware update】 on the 【More】 interface , and select the corresponding package to complete upgrading.

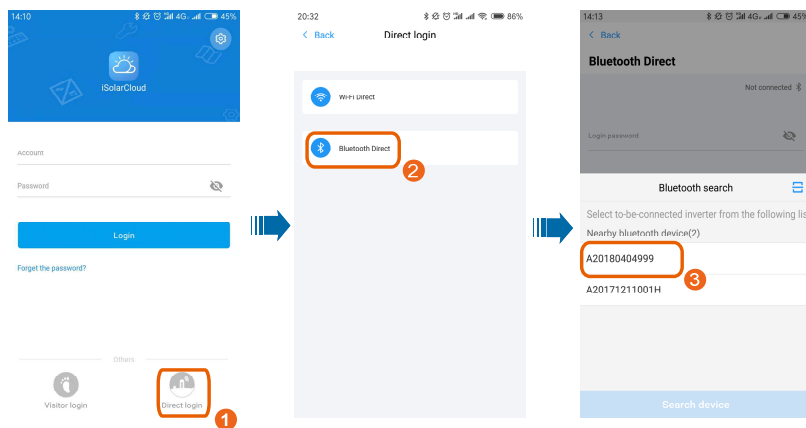


2.3 Bluetooth Direct Login (Near end)

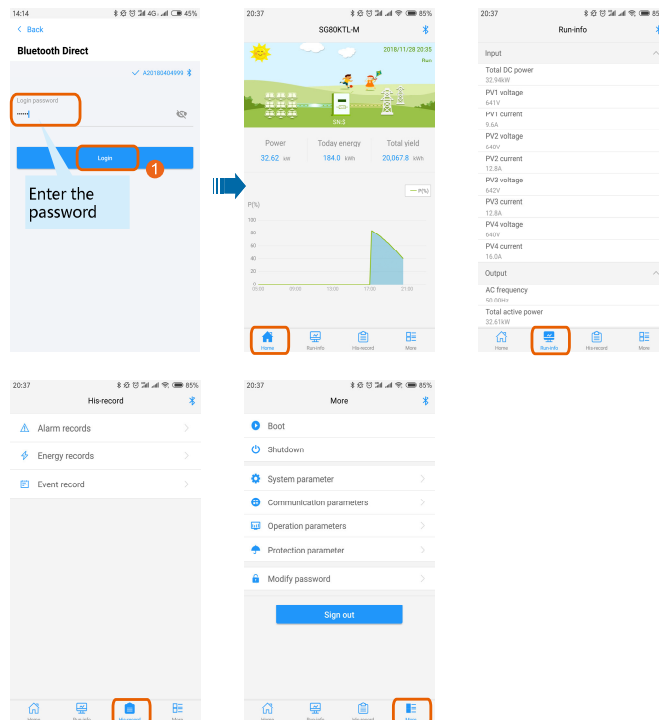


Ensure that the mobile phone is within the coverage of the Bluetooth signal when accessing the APP in the 【Bluetooth Direct】 mode.

Step 1 Open the APP, tap 【Direct Login】 in the lower left corner, and tap 【Bluetooth Direct】 on the next page. The Bluetooth search screen pops up automatically, and select the to-be-connected inverter according the SN on the nameplate of the inverter. The Bluetooth indicator is on once the connection established.



Step 2 Enter the login password, and tap the login button to access the APP.





The initial password is "111111", which should be modified for the consideration of account security.

【Home】 : Information such as real-time power, today power yields, and accumulated power yields is displayed.

【Run-info】 : Information such as input and output of the inverter is displayed.

【His-record】 : Fault alarm, power generation, and event records of the inverter are displayed.

【More】 : Perform operations such as starting and stopping inverter, parameter setting, and password modification.